

IX-DF-2RA / IX-SS-2RA Supplemental Instructions

Dip Switch "SW2" and Contact Locations

Default Settings:
 *Contact Input Set to "Call"
 *Output Specification Set to "Contact Input Call / Communication State"

DIP SWITCH "SW2" Settings (Relay PCB Dip Switch)

	Call Button		Emergency Button		Monitoring	Door Release State
	Calling	Talking	Calling	Talking		
Door Relay State	OFF	OFF	ON	ON	OFF	OFF
AUX RY1 State	ON	ON	ON	ON	ON	OFF
AUX RY2 State	OFF	ON	OFF	ON	ON	OFF

Door Release Settings:
 *Contact Input Set to "Call"
 *Output Specification Set to "Door Release"

DIP SWITCH "SW2" Settings (Relay PCB Dip Switch)

	Call Button		Emergency Button		Monitoring	Door Release State
	Calling	Talking	Calling	Talking		
Door Relay State	OFF	OFF	OFF	OFF	OFF	ON*
AUX RY1 State	ON	ON	ON	ON	ON	OFF
AUX RY2 State	OFF	OFF	ON	ON	OFF	OFF

*Door Release Operation Tone must be set to "Operation sound".

Manual Reset Settings:
 *Contact Input Set to "Call"
 *Output Specification Set to "Contact Input Call / Communication State"

DIP SWITCH "SW2" Settings (Relay PCB Dip Switch)

	Call Button		Emergency Button		Monitoring	Door Release State
	Calling	Talking	Calling	Talking		
Door Relay State	OFF	OFF	ON	ON	OFF	OFF
AUX RY1 State	ON	ON	ON	ON	ON	OFF
AUX RY2 State	OFF	OFF	ON	ON*	OFF	OFF

*AUX RY2 remains "ON" (latched) until Reset Connector "CN7" on PCB is shorted.

Optional Settings:
 *Contact Input Set to "Call"
 *Output Specification Set to "Contact Input Call / Communication State"

DIP SWITCH "SW2" Settings (Relay PCB Dip Switch)

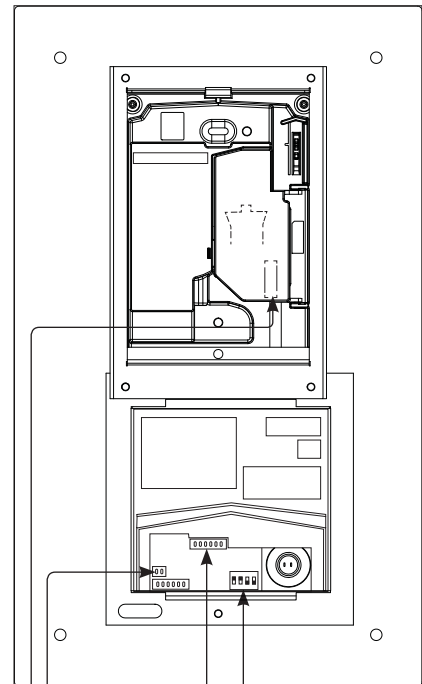
	Call Button		Emergency Button		Monitoring	Door Release State
	Calling	Talking	Calling	Talking		
Door Relay State	OFF	OFF	ON	ON	OFF	OFF
AUX RY1 State	ON	OFF	ON	OFF	OFF	OFF
AUX RY2 State	OFF	ON	OFF	ON	ON	OFF

Door Release & Manual Reset Settings:
 *Contact Input Set to "Call"
 *Output Specification Set to "Door Release"

DIP SWITCH "SW2" Settings (Relay PCB Dip Switch)

	Call Button		Emergency Button		Monitoring	Door Release State
	Calling	Talking	Calling	Talking		
Door Relay State	OFF	OFF	OFF	OFF	OFF	ON*
AUX RY1 State	ON	ON	ON	ON	ON	OFF
AUX RY2 State	OFF	OFF	ON	ON**	OFF	OFF

*Door Release Operation Tone must be set to "Operation sound".
 **AUX RY2 remains "ON" (latched) until Reset Connector "CN7" on PCB is shorted.



DIP Switch "SW2"

Aux Relay Outputs

- Aux Relay 1
- NO - brown
 - C - red
 - NC - orange

- Aux Relay 2
- NO - yellow
 - C - green
 - NC - blue

Reset Connector "CN7"

Option Connector

* Contact Input and Output Specification is set to desired state using the IX Support Tool while programming the door station.

IX Support Tool

The IX Emergency station is to be programmed to call designated master(s) via the red mushroom button at a higher priority. The mushroom button can call different masters than the standard call button calls. This procedure shows how to set up the emergency call button only. Station Association for all stations will need to be done prior to completing these steps. Refer to the IX Support Tool Setting Manual for complete programming instructions.

Use the IX Support Tool in the Table View.

The usage for the contact input of the station will need to be set to call. Expand **Contact / Audio Output Settings** and select **Contact Input** from the menu on the left. Use the drop down under "Usage" and select **Call** for the appropriate station (figure 1). Press the Update button to save changes.

Figure 1



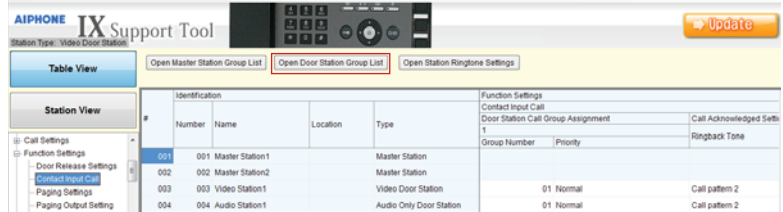
The contact output specifications will need to be set for contact input call / communication state. Select **Output Specifications** from the menu on the left. Use the drop down under "Usage" and select **Contact Input Call / Communication State** for the appropriate station (figure 2). Press the Update button to save changes.

Figure 2



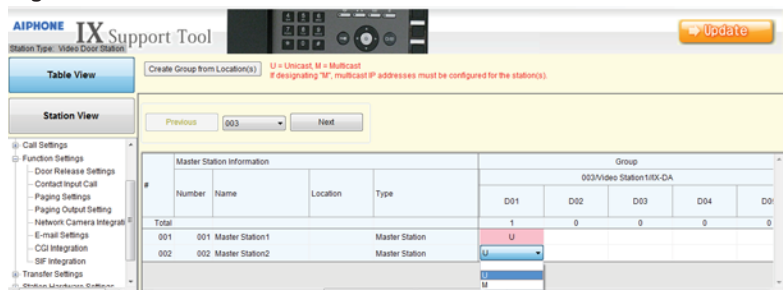
In order for the mushroom button push to be able to call the master(s), a door station group will need to be created. Expand **Function Settings** from the menu on the left and select **Contact Input Call**. Click on the **Open Door Station Group List** button at the top of the page (figure 3).

Figure 3



Once in the door station group list, scroll right to the appropriate door station and use the drop down to select "U" for Unicast or "M" for Multicast for each master station this door needs to call. It is recommended that Group D01 be set (figure 4). Press the Update button to save changes.

Figure 4



Select **Contact Input Call** again from the menu on the left. Using the drop down under Group Number, select the group that was created in the previous step. Using the drop down under Priority, select the priority level at which the mushroom button is to place a call (figure 5). Press the Update button to save changes.

Figure 5



Once all steps have been completed, the door station will need to be updated with the new settings. From the File Menu, select **Upload Settings To Station**. Check the box beside the station that has been updated and click Start Upload. The status menu will display the result of the upload.